

Rittal – The System.

Faster – better – everywhere.

► Base/plinth, complete Stainless steel, for one-piece consoles – TP 2867.000

Date : Apr 2, 2021

ENCLOSURES

POWER DISTRIBUTION

CLIMATE CONTROL

IT INFRASTRUCTURE

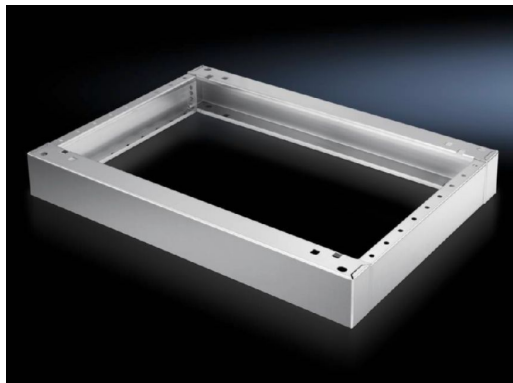
SOFTWARE & SERVICES

FRIEDHELM LOH GROUP



Base/plinth, complete Stainless steel, for one-piece consoles – TP 2867.000

created: 02.04.2021 on www.rittal.com/com-en



Product description

Description: Where necessary, 2 base/plinths may be installed one above the other.

Material: Stainless steel 1.4301 (AISI 304)

Surface finish: Brushed

Supply includes:
2 trim panels front/rear
2 trim panels, side
Assembly parts for mounting on the enclosure

Product description

To fit: Enclosure type: One-piece console, stainless steel
Width: = 1000 mm
Depth: = 400 mm

Dimensions: Height: 100 mm

Packs of: 1 pc(s).

Weight/pack: 9.24 kg

Copper weight (kg per piece): 0

EAN: 4028177033658

Customs tariff 94039010

number:

ETIM 7.0: EC000721

ETIM 6.0: EC000721

eCl@ss 8.0/8.1: 27182003

eCl@ss 6.0/6.1: 27189270

Product description: TP Base/plinth, complete, for one-piece console, WHD: 1000x100x400 mm, Stainless steel 1.4301

Approvals

Approvals: RRR

Certificates: EAC
NA
