

Rittal – The System.

Faster – better – everywhere.

► Base/plinth, complete Stainless steel, for one-piece consoles – TP 2870.000

Date : Apr 2, 2021

ENCLOSURES

POWER DISTRIBUTION

CLIMATE CONTROL

IT INFRASTRUCTURE

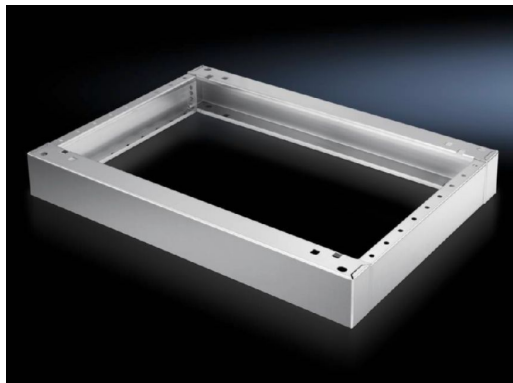
SOFTWARE & SERVICES

FRIEDHELM LOH GROUP



Base/plinth, complete Stainless steel, for one-piece consoles – TP 2870.000

created: 02.04.2021 on www.rittal.com/com-en



Product description

Description: Where necessary, 2 base/plinths may be installed one above the other.

Material: Stainless steel 1.4301 (AISI 304)

Surface finish: Brushed

Supply includes:
2 trim panels front/rear
2 trim panels, side
Assembly parts for mounting on the enclosure

Product description

To fit: Enclosure type: One-piece console, stainless steel
Width: = 1200 mm
Depth: = 400 mm

Dimensions: Height: 100 mm

Packs of: 1 pc(s).

Weight/pack: 9.52 kg

Copper weight (kg per piece): 0

EAN: 4028177033719

Customs tariff 94039010

number:	
ETIM 7.0:	EC000721
ETIM 6.0:	EC000721
eCl@ss 8.0/8.1:	27182003
eCl@ss 6.0/6.1:	27189270
Product description:	TP Base/plinth, complete, for one-piece console, WHD: 1200x100x400 mm, Stainless steel 1.4301
Approvals	
Approvals:	RRR
Certificates:	NA