

Plexo™ boxes IP 55 - IK 07



Dimensions (p. 752)

Pack	Cat.Nos	Weatherproof boxes
		Grey RAL 7035 Material: polystyrene box and polypropylene cover - halogen free Temperature rating: - 25 °C to + 40 °C Self-extinguishing 650 °C Conform to EN 60695 2-1 Opaque cover Membrane gland or pre-cut knock-out for ISO type cable gland Round boxes With fixing slots for easy alignment Use 5 mm Ø screws Alternatively use wall fixing Cat.No 319 57 Clip-on cover Ø60 mm x 40 mm - 4 glands (Cat.No 919 10) Ø70 mm x 45 mm - 4 glands (Cat.No 919 10)
5/100	650 °C 921 00	
5/100	921 01	
		Square boxes With fixing slots for easy alignment Use 5 mm Ø screws Alternatively use wall fixing Cat.No 319 57 Clip-on cover Internal dimension: H: 65 x W: 65 x D: 40 mm 7 glands (Cat.No 919 10)
5/100	650 °C 921 04	
5/100	921 26	Internal dimension: H: 80 x W: 80 x D: 45 mm 7 glands (Cat.No 919 10)
5/50	921 27	Internal dimension: H: 80 x W: 80 x D: 45 mm With pre-cut knock-outs

Pack	Cat.Nos	Weatherproof square boxes class II
		Mounting by: • either internal fixing points - use 5 mm Ø screws • or at three corners outside the wiring area - use 4 mm Ø screws Provision for anti-tamper seal Cover with 4 x 1/4 turn fixings, indicated I-O, can be retained open during installation
5/50	650 °C 921 36	Internal dimension: H: 105 x W: 105 x D: 55 mm 7 glands (Cat.No 919 11)
5/30	921 37	Internal dimension: H: 105 x W: 105 x D: 55 mm With pre-cut knock-outs

Pack	Cat.Nos	Accessories
20	312 10	Strip with four 4 mm ² terminal for junctions For fitting in Plexo boxes Cat.Nos 921 00/01, 921 04/26/27

Spare membrane glands (p. 751)

Plexo™ boxes IP 55 - IK 07 with direct entry membrane glands



Dimensions (p. 753)

Resistance to glow wire test: 750 °C (EN 60695 2-1)
 Operating temperature: - 25 °C to + 40 °C
 Interchangeable end caps
 Captive cover with clippable tie between box and cover except boxes 310 x 240 and 360 x 270
 Cover opens/closes with a 1/4 turn of a regular screwdriver, marking 0 and I
 Fixing with level adjustment
 • At 2 or 4 internal points (screw Ø5 mm max.)
 • At the four corners out of wiring volume (screw Ø4 mm max.)
 • With brackets Cat.No 358 02
 Class II is ensured by protection caps (supplied) for the attachment screws

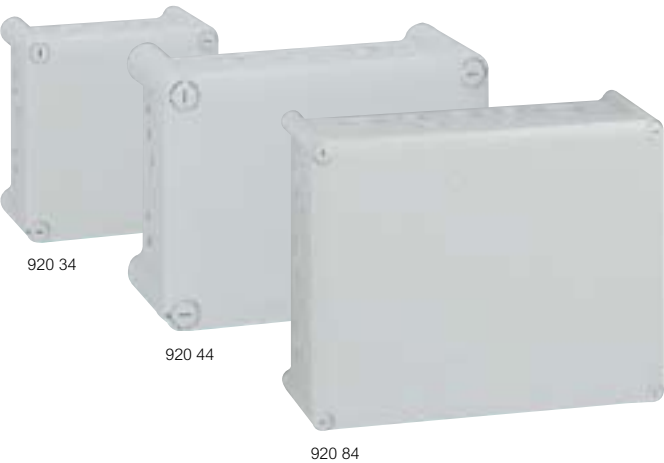
Pack	Cat.Nos	Weatherproof square boxes
1	Grey RAL 7035 920 32	Internal dimension: H: 130 x W: 130 x D: 74 mm 10 glands Ø cables and tubes accepted 4 to 25 mm
20	920 42	Internal dimension: H: 155 x W: 155 x D: 74 mm 10 glands ⁽¹⁾ Ø cables and tubes accepted 4 to 25 mm ⁽¹⁾
1/10	920 52	Internal dimension: H: 180 x W: 140 x D: 86 mm 10 glands ⁽¹⁾ Ø cables and tubes accepted 4 to 32 mm
1/10	920 62	Internal dimension: H: 220 x W: 170 x D: 86 mm 14 glands ⁽¹⁾ Ø cables and tubes accepted 4 to 32 mm
1/2	920 82	Internal dimension: H: 310 x W: 240 x D: 124 mm 24 glands ⁽¹⁾ Ø cables and tubes accepted 4 to 40 mm
1	920 92	Internal dimension: H: 360 x W: 270 x D: 124 mm 24 glands ⁽¹⁾ Ø cables and tubes accepted 4 to 40 mm

	Cable glands
	see p. 302

(1) See table on glands and accessories

Bold pack quantities: Minimum quantities to be ordered

Plexo™ boxes IP 55 - IK 07
with pre-cut knock-out ISO type cable entries



Dimensions (p. 753)

Resistance to glow wire test: 750 °C (EN 60695 2-1)
Operating temperature: - 25 °C to + 40 °C
Knock-out entries
Captive cover with clippable tie between box and cover except boxes 310 x 240 and 360 x 270
Cover opens/closes with a 1/4 turn of a regular screwdriver, marking 0 and 1
Fixing with level adjustment

- At 2 or 4 internal points (screw Ø5 mm max.)
- At the four corners out of wiring volume (screw Ø4 mm max.)
- With brackets Cat.No 358 02

Class II is ensured by protection caps (supplied) for the attachment screws

Pack	Cat.Nos	Weatherproof square boxes
1/10	Grey RAL 7035 920 34	Internal dimension: H: 130 x W: 130 x D: 74 mm 16 knock-out entries for ISO 12/16 4 knock-out entries for ISO 20/25

Pack	Cat.Nos	Weatherproof rectangular boxes
1/10	920 44	Internal dimension: H: 155 x W: 110 x D: 74 mm 16 knock-out entries for ISO 12/16 4 knock-out entries for ISO 20/25
1/5	920 54	Internal dimension: H: 180 x W: 140 x D: 86 mm 16 knock-out entries for ISO 16/20 4 knock-out entries for ISO 20/25
1/5	920 64	Internal dimension: H: 220 x W: 170 x D: 86 mm 12 knock-out entries for ISO 16/20 8 knock-out entries for ISO 20/25 4 knock-out entries for ISO 25/32
1/2	920 84	Internal dimension: H: 310 x W: 240 x D: 124 mm 2 knock-out entries for ISO 16/20 22 knock-out entries for ISO 20/25 6 knock-out entries for ISO 25/32 6 knock-out entries for ISO 32/40
1	920 94	Internal dimension: H: 360 x W: 270 x D: 124 mm 2 knock-out entries for ISO 16/20 18 knock-out entries for ISO 20/25 10 knock-out entries for ISO 25/32 6 knock-out entries for ISO 32/40


Plexo™ boxes accessories



Pack	Cat.Nos	Spare membrane glands
50	919 10	With marking of Ø for tubs and cables Direct entry for tubes (up to 16 mm) and cables Up to Ø20 For boxes with clip-on cover
50	919 11	Up to Ø25 For boxes 105 x 105 x 55 mm (Cat.No 921 36)
50	919 14	Up to Ø20 Grey (RAL 7035)
50	919 15	Up to Ø25 Grey (RAL 7035)
50	919 16	Up to Ø32 Grey (RAL 7035)
50	919 17	Up to Ø40 Grey (RAL 7035)


Pack	Cat.Nos	Fixing accessories
1	358 02	Set of 4 lugs For wall fixing supplied with screws

Pack	Cat.Nos	Equipment accessories
1	358 00	Set of 2 hinges (RAL 7016) For boxes 130 x 130 mm up to 220 x 170 mm included
1	358 01	For boxes 310 x 240 and 360 x 270 mm



Other industrial plastic boxes

see p. 272

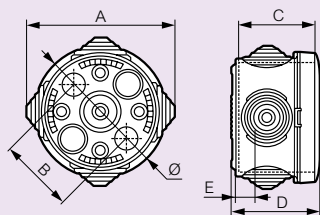


Nylbloc auto terminal support

see p.756

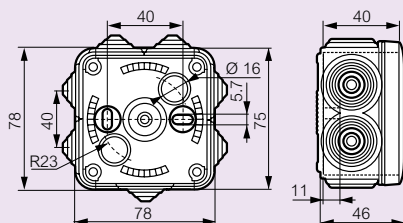
Plexo™ boxes

Cat.Nos 921 00/01

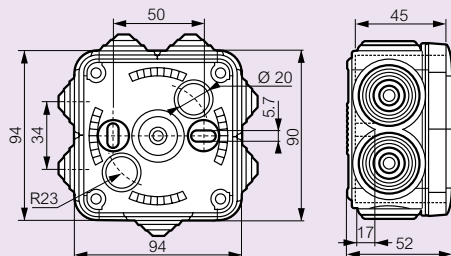


Cat.Nos	Ø	A	B	C	D	E
921 00	60	79	40	44.5	40	11
921 01	70	86	50	49.5	45	11

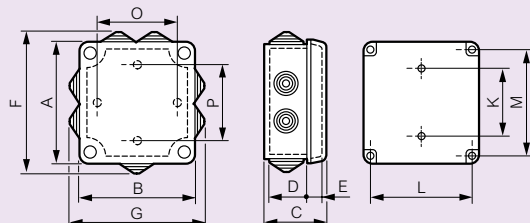
Cat.No 921 04



Cat.Nos 921 26/27



Cat.Nos 921 36/37



Cat.Nos	A	B	F	G	C	D	E	Fixing of box			S dm ²	Fixing of accessories (screw Ø4 mm)	
								K	L	M		O	P
921 36	116	116	132	132	60	41.8	13.4	50	95	95	1.34	80	80
921 37	116	116	121	121	60	41.8	13.4	50	95	95	1.34	80	80

■ User of membrane glands per type of boxes

Boxes	Membrane glands			
	Ø20	Ø25	Ø32	Ø40
Round				
Ø60	4			
Ø70	4			
Square				
65 x 65 x 40	7			
80 X 80 X 45	7			
105 X 105 X 55		7		
130 X 130 X 74	2	8		
Rectangular				
155 X 110 X 74	2	8		
180 X 140 X 86		4	6	
220 X 170 X 86		8	6	
310 X 240 X 124			18	6
360 X 270 X 124			16	8

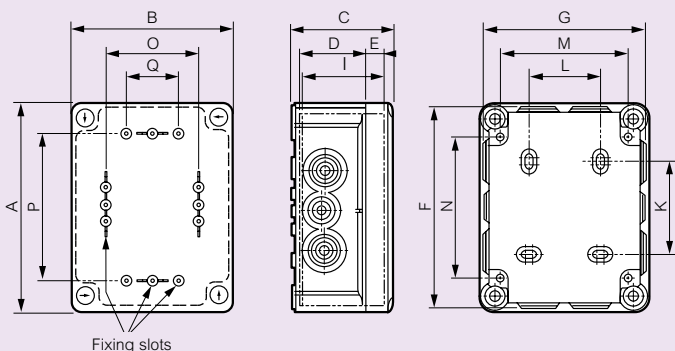
Plexo™ square and rectangular boxes

dimensions and equipment with terminal blocks

■ Dimensions

Plexo square boxes 130 x 130 mm Cat.Nos 920 32/34

Plexo rectangular boxes Cat.Nos 920 42/44/52/54/62/64/82/84/92/94



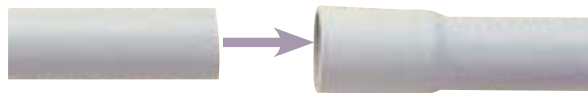
Fixing slots

Cat.Nos	Dimensions (mm)	A	B	F	G	C	D	E	I	Fixing of box				Fixing of accessories (screw Ø4 mm)		
										K	L	M	N	O	P	Q
920 32/34	130 x 130 x 74	150	150	149	149	81	56	18	67	54	70	120	103	106	106	84
920 42/44	155 x 110 x 74	175	130	173	128	81	56	18	67	79	50	100	128	86	131	64
920 52/54	180 x 140 x 86	200	160	205	165	94	69	18	80	104	50	130	153	116	156	94
920 62/64	220 x 170 x 86	240	190	245	195	94	69	18	80	144	80	160	193	146	196	124
920 82/84	310 x 240 x 124	332	262	340	270	132	97	27	116	220	160	222	276	200	260	150
920 92/94	360 x 270 x 124	382	292	390	300	132	97	27	116	270	190	252	326	230	310	150

■ Equipment with terminal blocks

Boxes (mm)	Bare terminal blocks on support and IP 2X blocks				
	4 holes	8 holes	13 holes	17 holes	22 holes
130 x 130 x 74	•	•			
155 x 110 x 74	•	•	•		
180 x 140 x 86	•	•	•		•
220 x 170 x 86	•	•	•	•	•
310 x 240 x 124	•	•	•	•	•
360 x 270 x 124	•	•	•	•	

rigid conduits



6514 16



319 06



319 00



313 82



313 83

Rigid conduit with integrated coupling

Pack	Cat.Nos	<p>Flame-retardant Surface-mounting or flush-mounting Suitable for prefabricated concrete Conforming to European standard: EN 61386-21 and IEC 61386-21 Crush resistance: 750 Newtons Shock resistance: 2 joules at - 5 °C Min operating t°: - 5 °C Max operating t°: + 60 °C IK 07 Can be used outside Supplied wrapped in film. Grey (RAL 7035) Length of tubes: 3 m</p>		
		Ø exterior (mm)	Ø interior (mm)	thickness (mm)
30	6514 16	16	13	1.50
30	6514 20	20	16.9	1.55
30	6514 25	25	21.4	1.80
15	6514 32	32	27.8	2.10

Clipsotubes

	Grey RAL 7035	<p>Fixing by Ø7 mm thread 150 mm pin, screw-in wall plugs Cat.No 319 57, screw Ø5 mm or nail For interior use Halogen free Holding of flexible and rigid conduits</p>		
		Ø mini	Ø maxi	
100	319 03	15	16	For IRL Ø16 mm
100	319 04	18.4	20.6	For IRL Ø20 mm
100	319 06	22.3	25	For IRL Ø25 mm

Cable ties with base

		<p>Adjustable for conduits IRL Ø16 to 32 mm or for cable Ø13 to 38 mm Fixing by Ø7 mm thread 150 mm pin, screw in wall plugs Cat.No 319 57, screw Ø5 mm Can be fixed using Pulsa 700 E staple gun Halogen free</p>		
100	319 02	For interior and exterior use - U.V. protected Black colour		
100/1000	319 00	For interior use - Grey RAL 7035		

Conduit supports with screw-in wall plug

		<p>Conduit supports For conduit Ø 16 For conduit Ø 20 For conduit Ø 25</p>		
100	313 80	For conduit Ø 16		
100	313 81	For conduit Ø 20		
50	313 82	For conduit Ø 25		
		<p>Conduit supports accessory For fixing in plasterboard plate</p>		
200	313 83			

Flexible conduits (p. 731)

High impact flexible conduits also available pre-wired with H07V-U 1.5², 2.5², 4² or 6² wires or coaxial 19 VATC cable

Please consult us

accessories for conduits flexible and rigid conduits



6516 01



6516 08



6516 11



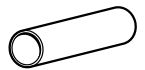
6516 18



6516 32

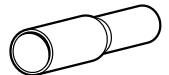
Couplings

Pack	Cat.Nos	<p>For connecting conduits of the same diameter Grey (RAL 7035) Ø (mm)</p>	
100	6516 01	16	
100	6516 02	20	
50	6516 03	25	
25	6516 04	32	



Reducers

		<p>For connecting conduits of different diameters Grey (RAL 7035) Ø (mm)</p>	
100	6516 08	20 x 16	
50	6516 09	25 x 20	



Elbows

		<p>Used to change direction even after the wires have been installed. 2-part assembly to save time and simplify installation. Grey (RAL 7035) Ø (mm)</p>	
50	6516 11	16	
50	6516 12	20	
25	6516 13	25	



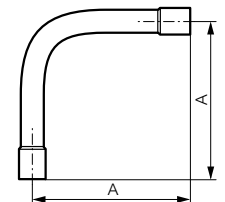
Tees

		<p>Used to join conduits together and to change direction even after the wires have been installed 2-part assembly to save time and simplify installation Grey (RAL 7035) Ø (mm)</p>	
50	6516 18	16	
25	6516 19	20	
25	6516 20	25	



Bends

		<p>90° curves Grey (RAL 7035) Ø (mm)</p>	
20	6516 26	20	A = 130 mm
10	6516 27	25	A = 160 mm
25	6516 28	32	A = 200 mm



Bending springs

		<p>Used to bend rigid conduits Ø (mm) Length (mm)</p>	
1	6516 32	16	600
1	6516 33	20	800
1	6516 34	25	800

Nylon draw tape

		<p>Flexible cable which can be used to guide the wires into an unwired conduit. 2 metal end caps End cap diameter: 6 mm at both ends for attaching the wires</p>	
1	6516 36	Length: 20 m	

fixing devices for conduits
cable clips



Cable clips come packaged so as to allow for unit distribution and storage of unused clips

Pack	Cat.Nos
100	Black 319 57

Screw-in wall plugs

For use with cable ties with base, clipsotube, conduit supports
Halogen free
Threaded head Ø6.6 pitch 150, drilling Ø8 mm (smooth material Ø7 mm)

Pack	Grey		Cable	Pin	Length (mm)
	RAL 7035	White			
100/1000	315 77		7 to 10	1.8	25
100	315 78		10 to 14	1.8	30
100	315 79		14 to 20	2.5	40
30	315 81		25 to 32	2.5	50
100/2000	315 24	315 54	5	1.8	20
100/1000	315 25	315 55	6	1.8	25
100/1000	315 26	315 56	7	1.8	25
100/1000	315 27	315 57	8	1.8	25
100/1000	315 28	315 58	9	1.8	25
100	315 29		10	1.8	30
100		315 59	10	1.8	30
100	315 30		12	1.8	30
100	315 31		14	2.5	40
100	315 32		16	2.5	40
80	315 33		17	2.5	40
60	315 34		19	2.5	40
40	315 35		22	2.5	50
20	315 36		29	2.5	50

Cable clips for concrete materials

Multifix

Expanding cable clips, accept several sizes of cable

Cable		Pin	
Ø (mm)	Ø (inches)	Ø (mm)	Length (mm)
7 to 10	9/32 to 25/64	1.8	25
10 to 14	25/64 to 9/16	1.8	30
14 to 20	9/16 to 5/8	2.5	40
25 to 32	1 to 5/4	2.5	50

Fixfor

Cable		Pin	
Ø (mm)	Ø (inches)	Ø (mm)	Length (mm)
5	13/64	1.8	20
6	15/64	1.8	25
7	9/32	1.8	25
8	5/16	1.8	25
9	23/64	1.8	25
10	25/64	1.8	30
10	25/64	1.8	30
12	15/32	1.8	30
14	9/16	2.5	40
16	5/8	2.5	40
17	43/64	2.5	40
19	3/4	2.5	40
22	7/8	2.5	50
29	1"9/64	2.5	50

conduit supports

■ Installation Cat.Nos 313 80/81/82 (p. 754)



Drill to diam. 8 mm



Strike conduit support



Untie unused elements



Conduit support is fixed



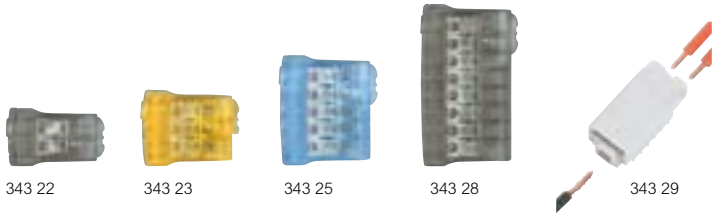
Clip conduit



Lock with flap

screwless connection terminals
Nylbloc™ auto

Nylbloc™ screw terminal strips
and connectors without screws



Pack	Cat.Nos	Screwless connection terminals - Nylbloc auto
		No tool direct connection after simple stripping of copper conductors Test socket for tester screwdriver or test tip Cat.No 394 45 (p. 355) for IP 2x test or Ø4 mm tip on Nylbloc auto terminals Conform to EN 60998-2-2 For rigid cable from 0.75 to 2.5 mm ² Stripping length: 11 mm Connection by separate crimping blades Transparent rase providing full visibility of the connections Colour code to identify products Duplix marking possible on 3.5 and 8-wire terminals Max. intensity: 24 A Insulating voltage: 450 V~
100	343 22	Grey terminal for 2 wires
100	343 23	Orange terminal for 3 wires
100	343 25	Blue terminal for 5 wires
50	343 28	Grey terminal for 8 wires



Pack	Cat.Nos	Mixed screwless connection terminal
		Enables connection of rigid and flexible cable - 2 incoming for rigid cable from 1 to 2.5 mm ² (power supply and shunt) - 1 outgoing for flexible cable or from 0.5 to 2.5 mm ² (use) Stripping length: 8-9 mm Flexible cable connection by simple push on terminal Connection by separate crimping blades Max. intensity: 24 A Insulating voltage: 400 V~
100	343 29	Mixed grey terminal

Pack	Cat.Nos	Nylbloc connection strips																		
		12 elements with captive screws Supplied with screws undone Flame retardant polypropylene (- 25°C to + 100°C) Ambient temperature from - 25°C to + 55°C (T 55) Conform to EN 60998-2-1 and EN 60664-1 Self-extinguishing to EN 60695-2-11 at 850° Insulation voltage: 250 V according to EN 60 998-2-1 Use at 400 V integrated in a series of products that comply with the requirements of EN 60664-1, pollution degree 2, overload category III																		
		<table border="1"> <thead> <tr> <th>Rated capacity (mm²)</th> <th>hole Ø (mm)</th> <th>Max current (A)</th> </tr> </thead> <tbody> <tr> <td>2.5</td> <td>2.5</td> <td>24</td> </tr> <tr> <td>6</td> <td>3.5</td> <td>41</td> </tr> <tr> <td>10</td> <td>4.5</td> <td>57</td> </tr> <tr> <td>16</td> <td>5.5</td> <td>76</td> </tr> <tr> <td>25</td> <td>7</td> <td>101</td> </tr> </tbody> </table>	Rated capacity (mm ²)	hole Ø (mm)	Max current (A)	2.5	2.5	24	6	3.5	41	10	4.5	57	16	5.5	76	25	7	101
Rated capacity (mm ²)	hole Ø (mm)	Max current (A)																		
2.5	2.5	24																		
6	3.5	41																		
10	4.5	57																		
16	5.5	76																		
25	7	101																		
		<table border="1"> <thead> <tr> <th>Rated capacity (mm²)</th> <th>hole Ø (mm)</th> <th>Max current (A)</th> </tr> </thead> <tbody> <tr> <td>2.5</td> <td>2.5</td> <td>24</td> </tr> <tr> <td>6</td> <td>3.5</td> <td>41</td> </tr> <tr> <td>10</td> <td>4.5</td> <td>57</td> </tr> <tr> <td>16</td> <td>5.5</td> <td>76</td> </tr> </tbody> </table>	Rated capacity (mm ²)	hole Ø (mm)	Max current (A)	2.5	2.5	24	6	3.5	41	10	4.5	57	16	5.5	76			
Rated capacity (mm ²)	hole Ø (mm)	Max current (A)																		
2.5	2.5	24																		
6	3.5	41																		
10	4.5	57																		
16	5.5	76																		
10	342 11	Black																		
10	342 13	Black																		
10/200	342 15	Black																		
10	342 17	Black																		
10	342 19	Black																		
10	342 21	White																		
10	342 23	White																		
10	342 25	White																		
10	342 27	White																		

Pack	Cat.Nos	Accessories
1/5	343 99	Conductor stripping tool For cable desheathing and rapid wire stripping in flush-mounting and junction boxes, in trunking For cable Ø8 mm to 13 mm (from 2 G 1.5 to 5 G 2.5 mm ²) and wires 1.5 mm ² and 2.5 mm ²
10	343 98	Nylbloc auto terminal support For up to 3 screwless connection terminals Nylbloc auto (Cat.Nos 343 22/23/25/28) Direct fixing: - in top of Plexo boxes and industrial plastic cabinets ≥ 130 x 130 mm - on flat bar 12 x 2 mm - in bottom of fully assembled, adaptable and aluminium DLP trunkings (from 50 x 80 mm) Screw fixing: - in bottom of Plexo boxes ≥ 105 x 105 mm and industrial plastic cabinets - universal Fixing on rail with accessory Cat.No 048 11 (p. 250) Accessible test socket Marking zone with felt tip pen Cat.No 395 98 (p. 354)

Pack	Cat.Nos	Connectors without screws - Capvis caps																												
		Rapid connection for 1.5 - 2.5 - 4 and 6 mm ² solid conductor cables - 440 V insulation																												
		<table border="1"> <thead> <tr> <th>Nominal capacity (mm²)</th> <th>No of cables and corresponding sections (mm²)</th> <th>Cap colour</th> <th>Packaging type</th> </tr> </thead> <tbody> <tr> <td>1.5</td> <td>3 to 5 of 0.5² 2 to 4 of 0.75² 2 of 1.5²</td> <td>blue</td> <td>box</td> </tr> <tr> <td>1.5 to 2.5</td> <td>3 to 5 of 0.5² 2 to 5 of 0.75² 2 to 3 of 1.5² 2 of 2.5²</td> <td>orange</td> <td>box</td> </tr> <tr> <td>4</td> <td>2 to 4 of 1.5² 2 to 3 of 2.5² 2 of 4²</td> <td>yellow</td> <td>box</td> </tr> <tr> <td>6</td> <td>2 to 5 of 2.5² 2 to 3 of 4² 2 of 6²</td> <td>red</td> <td>box</td> </tr> <tr> <td>2 000</td> <td>2 to 4 of 1.5² 2 to 3 of 2.5² 2 of 4²</td> <td>yellow</td> <td>bucket</td> </tr> <tr> <td>1 500</td> <td>2 to 5 of 2.5² 2 to 3 of 4² 2 of 6²</td> <td>red</td> <td>bucket</td> </tr> </tbody> </table>	Nominal capacity (mm ²)	No of cables and corresponding sections (mm ²)	Cap colour	Packaging type	1.5	3 to 5 of 0.5 ² 2 to 4 of 0.75 ² 2 of 1.5 ²	blue	box	1.5 to 2.5	3 to 5 of 0.5 ² 2 to 5 of 0.75 ² 2 to 3 of 1.5 ² 2 of 2.5 ²	orange	box	4	2 to 4 of 1.5 ² 2 to 3 of 2.5 ² 2 of 4 ²	yellow	box	6	2 to 5 of 2.5 ² 2 to 3 of 4 ² 2 of 6 ²	red	box	2 000	2 to 4 of 1.5 ² 2 to 3 of 2.5 ² 2 of 4 ²	yellow	bucket	1 500	2 to 5 of 2.5 ² 2 to 3 of 4 ² 2 of 6 ²	red	bucket
Nominal capacity (mm ²)	No of cables and corresponding sections (mm ²)	Cap colour	Packaging type																											
1.5	3 to 5 of 0.5 ² 2 to 4 of 0.75 ² 2 of 1.5 ²	blue	box																											
1.5 to 2.5	3 to 5 of 0.5 ² 2 to 5 of 0.75 ² 2 to 3 of 1.5 ² 2 of 2.5 ²	orange	box																											
4	2 to 4 of 1.5 ² 2 to 3 of 2.5 ² 2 of 4 ²	yellow	box																											
6	2 to 5 of 2.5 ² 2 to 3 of 4 ² 2 of 6 ²	red	box																											
2 000	2 to 4 of 1.5 ² 2 to 3 of 2.5 ² 2 of 4 ²	yellow	bucket																											
1 500	2 to 5 of 2.5 ² 2 to 3 of 4 ² 2 of 6 ²	red	bucket																											
100/1000	343 38	Blue																												
100/1000	343 44	Orange																												
100/2 000	343 51	Yellow																												
100	343 57	Red																												
2 000	6340 51	Yellow																												
1 500	6340 52	Red																												

line taps and equipotential bonding connectors



340 03



340 33



340 42



340 45



343 85

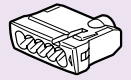
Pack	Cat.Nos	Line taps																																												
		Strip of 10 separable line taps																																												
		<table border="1"> <thead> <tr> <th>With feet</th> <th>Capacity per tap (mm²)</th> <th>Width (mm)</th> </tr> </thead> <tbody> <tr> <td>10</td> <td>340 00</td> <td>2 x 6</td> <td>15</td> </tr> <tr> <td>10</td> <td>340 01</td> <td>2 x 10</td> <td>19.5</td> </tr> <tr> <td>10</td> <td>340 02</td> <td>2 x 16</td> <td>21</td> </tr> <tr> <td>10</td> <td>340 03</td> <td>2 x 25</td> <td>21.5</td> </tr> <tr> <td>10</td> <td>340 04</td> <td>2 x 35</td> <td>25</td> </tr> </tbody> </table>	With feet	Capacity per tap (mm ²)	Width (mm)	10	340 00	2 x 6	15	10	340 01	2 x 10	19.5	10	340 02	2 x 16	21	10	340 03	2 x 25	21.5	10	340 04	2 x 35	25																					
With feet	Capacity per tap (mm ²)	Width (mm)																																												
10	340 00	2 x 6	15																																											
10	340 01	2 x 10	19.5																																											
10	340 02	2 x 16	21																																											
10	340 03	2 x 25	21.5																																											
10	340 04	2 x 35	25																																											
		Non-shear line taps																																												
		Hexagonal head																																												
		<table border="1"> <thead> <tr> <th>Without feet</th> <th>Capacity per tap (mm²)</th> <th>Width of slot (max. cable Ø in mm)</th> <th>Overall height (mm)</th> <th>Fixing centres (mm)</th> </tr> </thead> <tbody> <tr> <td>20</td> <td>340 33</td> <td>2 x 25</td> <td>7.4</td> <td>49</td> </tr> <tr> <td>10</td> <td>340 34</td> <td>2 x 50</td> <td>9.5</td> <td>59</td> </tr> <tr> <td></td> <td></td> <td>With feet</td> <td></td> <td></td> </tr> <tr> <td>20</td> <td>340 42</td> <td>2 x 16</td> <td>5.8</td> <td>41</td> <td>37</td> </tr> <tr> <td>20</td> <td>340 43</td> <td>2 x 25</td> <td>7.4</td> <td>49</td> <td>37</td> </tr> <tr> <td>10</td> <td>340 44</td> <td>2 x 50</td> <td>9.5</td> <td>59</td> <td>44</td> </tr> <tr> <td>10</td> <td>340 45</td> <td>2 x 75</td> <td>11.7</td> <td>71</td> <td>62</td> </tr> </tbody> </table>	Without feet	Capacity per tap (mm ²)	Width of slot (max. cable Ø in mm)	Overall height (mm)	Fixing centres (mm)	20	340 33	2 x 25	7.4	49	10	340 34	2 x 50	9.5	59			With feet			20	340 42	2 x 16	5.8	41	37	20	340 43	2 x 25	7.4	49	37	10	340 44	2 x 50	9.5	59	44	10	340 45	2 x 75	11.7	71	62
Without feet	Capacity per tap (mm ²)	Width of slot (max. cable Ø in mm)	Overall height (mm)	Fixing centres (mm)																																										
20	340 33	2 x 25	7.4	49																																										
10	340 34	2 x 50	9.5	59																																										
		With feet																																												
20	340 42	2 x 16	5.8	41	37																																									
20	340 43	2 x 25	7.4	49	37																																									
10	340 44	2 x 50	9.5	59	44																																									
10	340 45	2 x 75	11.7	71	62																																									
		Equipotential bonding connectors																																												
		Used to make equipotential connections on the installation busbar systems																																												
		Safe, intuitive 1/4 turn mounting ensuring an excellent, lasting equipotential link																																												
		<table border="1"> <thead> <tr> <th rowspan="2"></th> <th colspan="2">Busbar system</th> <th rowspan="2">Max. connection cross-section (mm)</th> </tr> <tr> <th>Ø min. (mm)</th> <th>Ø max. (mm)</th> </tr> </thead> <tbody> <tr> <td>20</td> <td>343 85</td> <td>12</td> <td>16</td> <td>6</td> </tr> <tr> <td>10</td> <td>343 86</td> <td>18</td> <td>22</td> <td>16</td> </tr> <tr> <td>10</td> <td>343 87</td> <td>28</td> <td>32</td> <td>16</td> </tr> </tbody> </table>		Busbar system		Max. connection cross-section (mm)	Ø min. (mm)	Ø max. (mm)	20	343 85	12	16	6	10	343 86	18	22	16	10	343 87	28	32	16																							
	Busbar system			Max. connection cross-section (mm)																																										
	Ø min. (mm)	Ø max. (mm)																																												
20	343 85	12	16	6																																										
10	343 86	18	22	16																																										
10	343 87	28	32	16																																										

equipotential bonding connectors

■ Screwless connections terminals

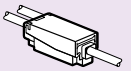
Connection terminals Nylbloc auto Cat.Nos 343 22/23/25/28

Ambient temperature: - 25 °C to + 55 °C (T55)
Self-extinguishing: 960 °C according to EN 60695-2-11
Halogen free polycarbonate

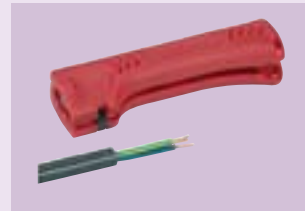


Mixed connection terminal Cat.No 343 29

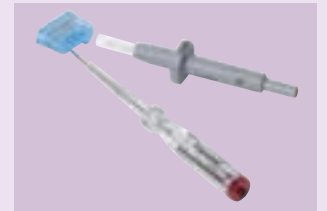
Ambient temperature: - 40 °C to + 60 °C (T60)
Self-extinguishing: 960 °C according to EN 60695-2-11
Halogen free polyamide



Use



Cat.No 343 99 tool for cable desheathing and rapid wire stripping



Test via IP 2X test tip Cat.No 394 45



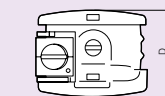
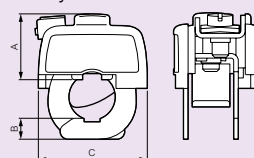
Plexo box with support Cat.No 343 98 directly fixed on top part



Trunking adaptable DLP with support Cat.No 343 98 directly fixed

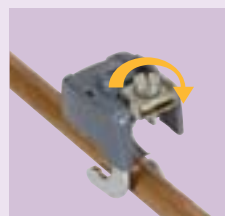
■ Characteristics

- Resistance to incandescent wire 960°C
- Resistivity ≤ 0.4 mΩ
- Polyamide
- Grey



Cat.Nos	Dimensions (mm)			
	A	B	C	D
343 85	24	8	40.5	31.5
343 85	24	9	49	40
343 87	24	11	59	46.5

■ Installation



1 Fixed with a quarter turn



2 Held in place by a stainless steel spring blade



3 Final locking with 5.5 mm screwdriver



4 Connecting the equipotential bonding